

**FOR LEASE**

# Hyde Park Flex Space

320 S. Lulu St Wichita, KS 67211

Contact Information

**Jake Ramstack**

Jake@InSiteRE.com

**(316) 618-1100**



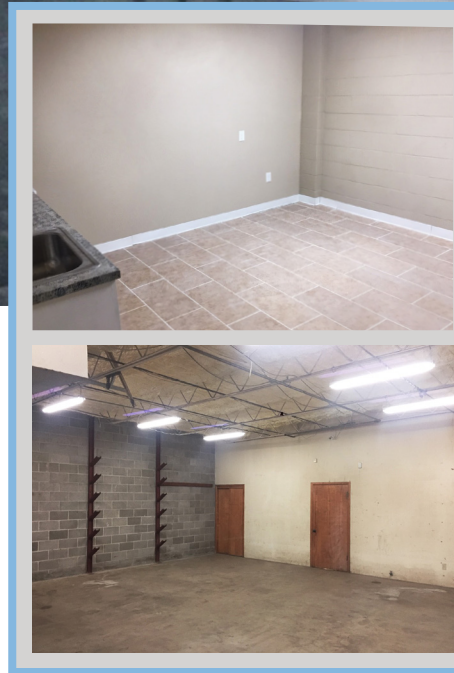
## Leasing Information

Space Available:	1,950 SF
Lease Rate:	\$1,800/month
Lease Type:	Gross
Zoning:	General Commerical

## Demographics

Population Within 3 Miles:	111,615
Median Household Income (Wichita):	\$45,455

*Statistics Provided by esri*

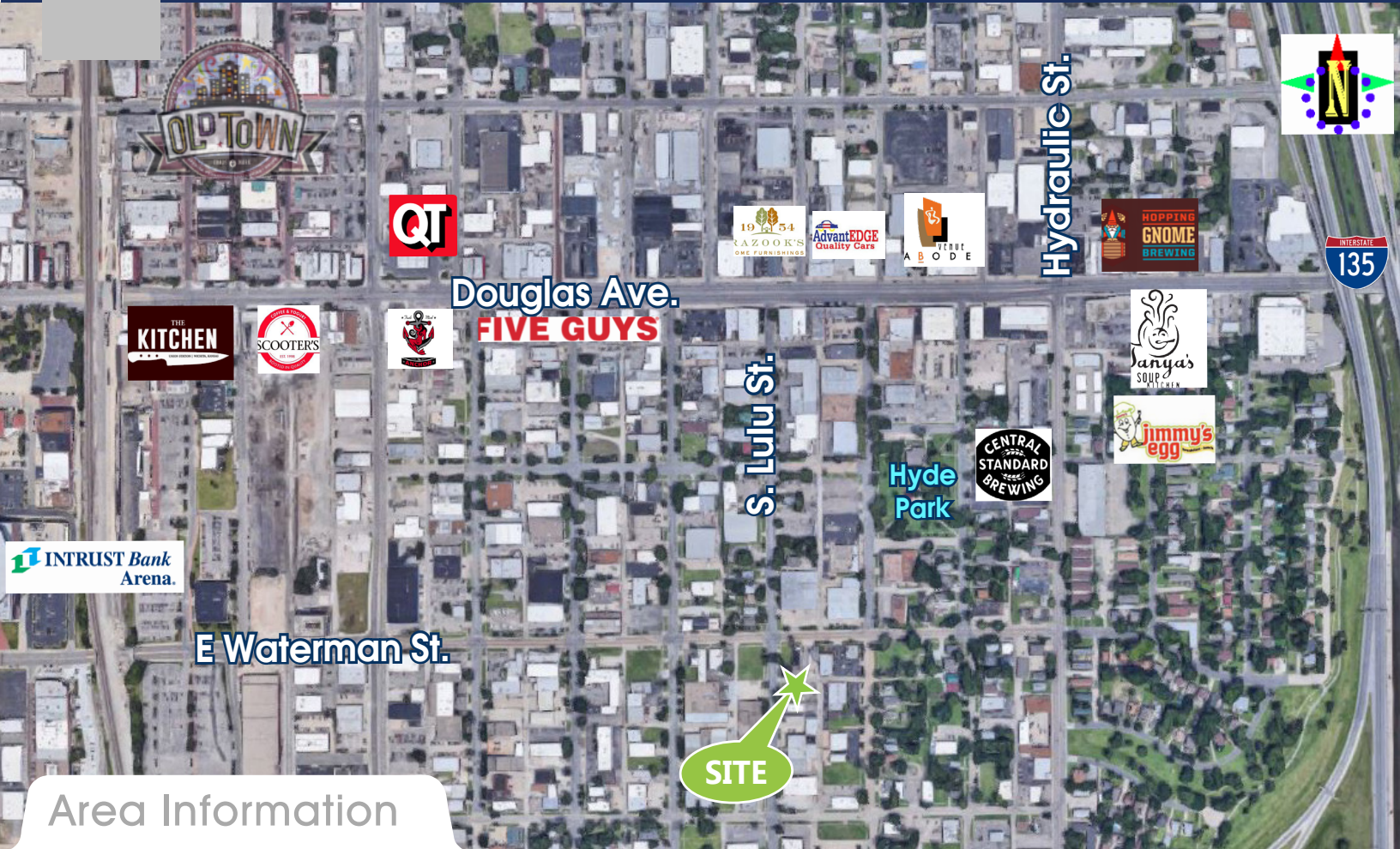


- ✓ Nice Office space
- ✓ Conference Room
- ✓ 2 bathrooms
- ✓ Fenced Outdoor Storage
- ✓ Insulated Warehouse
- ✓ Central Location

FOR LEASE

# Hyde Park Flex Space

320 S. Lulu St Wichita, KS 67211



## Area Information

**Area Neighbors:** Old Town, QuikTrip, INTRUST Bank Arena, Tanya's Soup Kitchen, Hopping Gnome, Jimmy's Egg, Central Standard Brewing, The Donut Whole, ABODE Venue, Razook's Furniture, Scooters Coffee, Five Guys



Contact Information  
**Jake Ramstack**  
Jake@InSiteRE.com  
(316) 618-1100